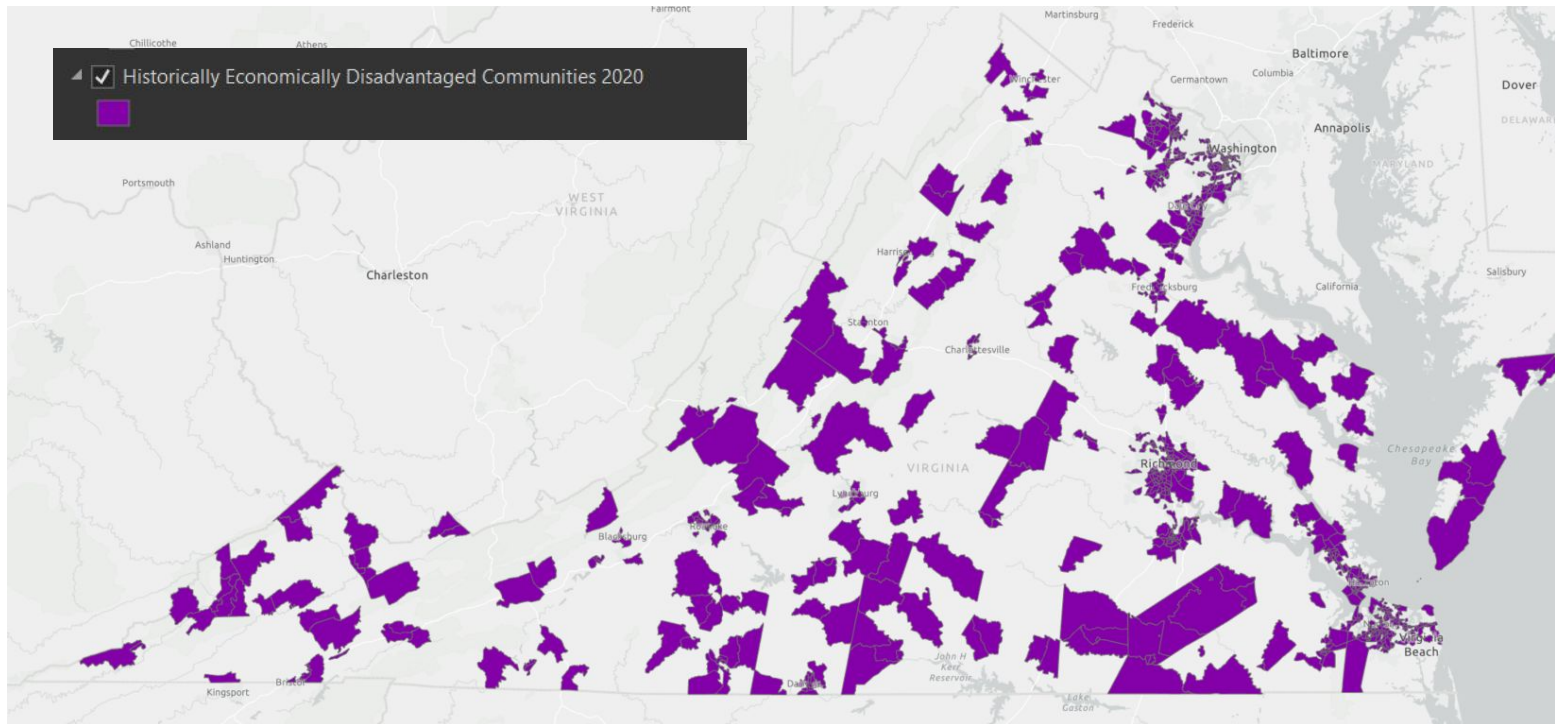


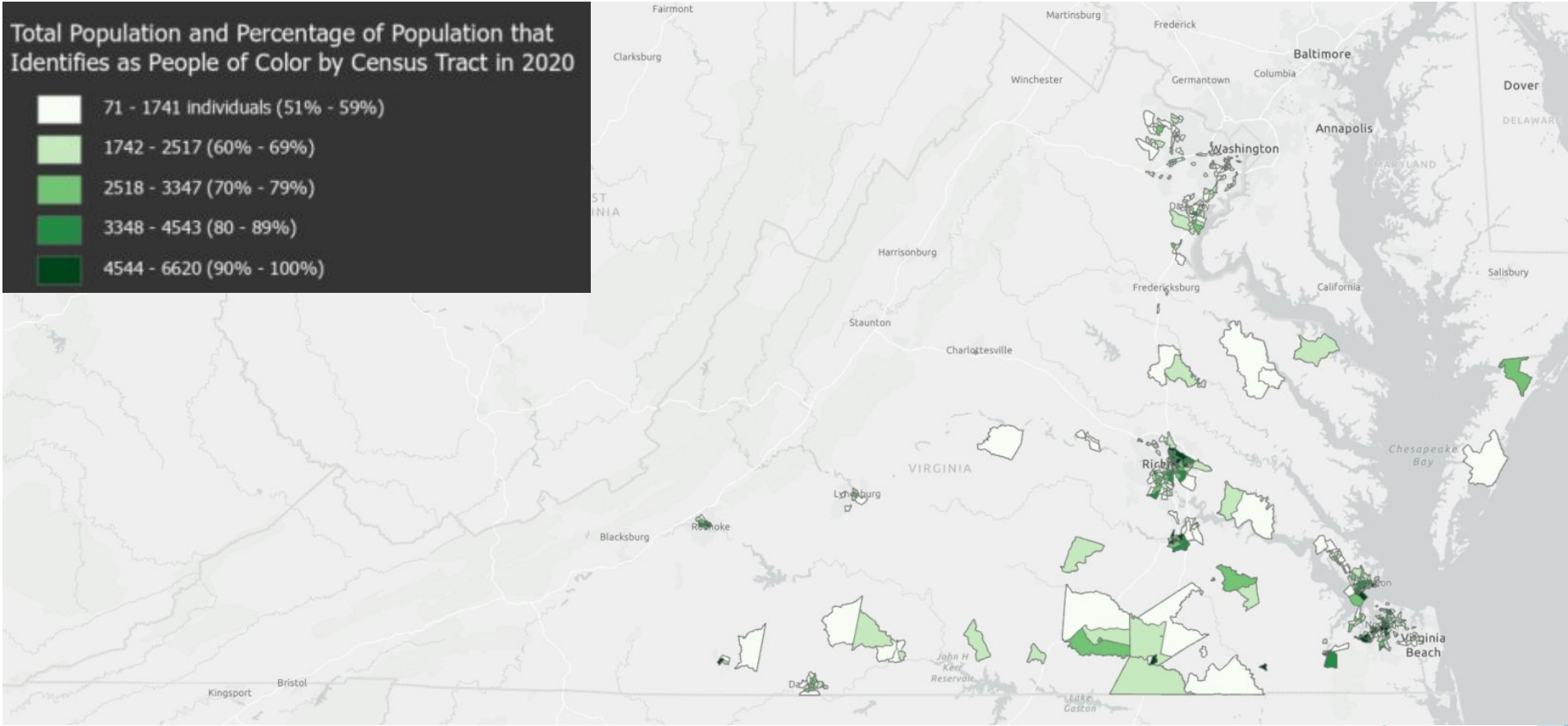
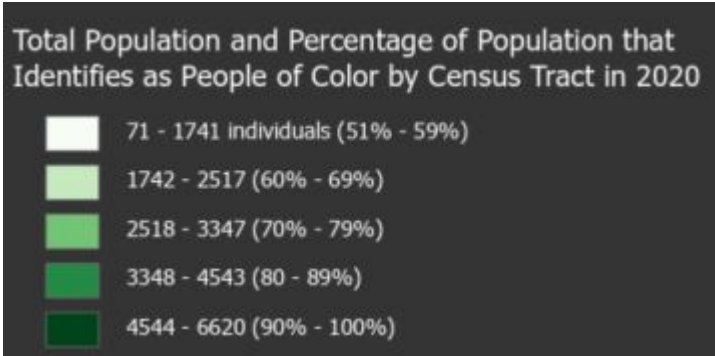
Historically Economically Disadvantaged Communities in 2020

*A Project of Virginia Department of Energy
per the Virginia Clean Economy Act*

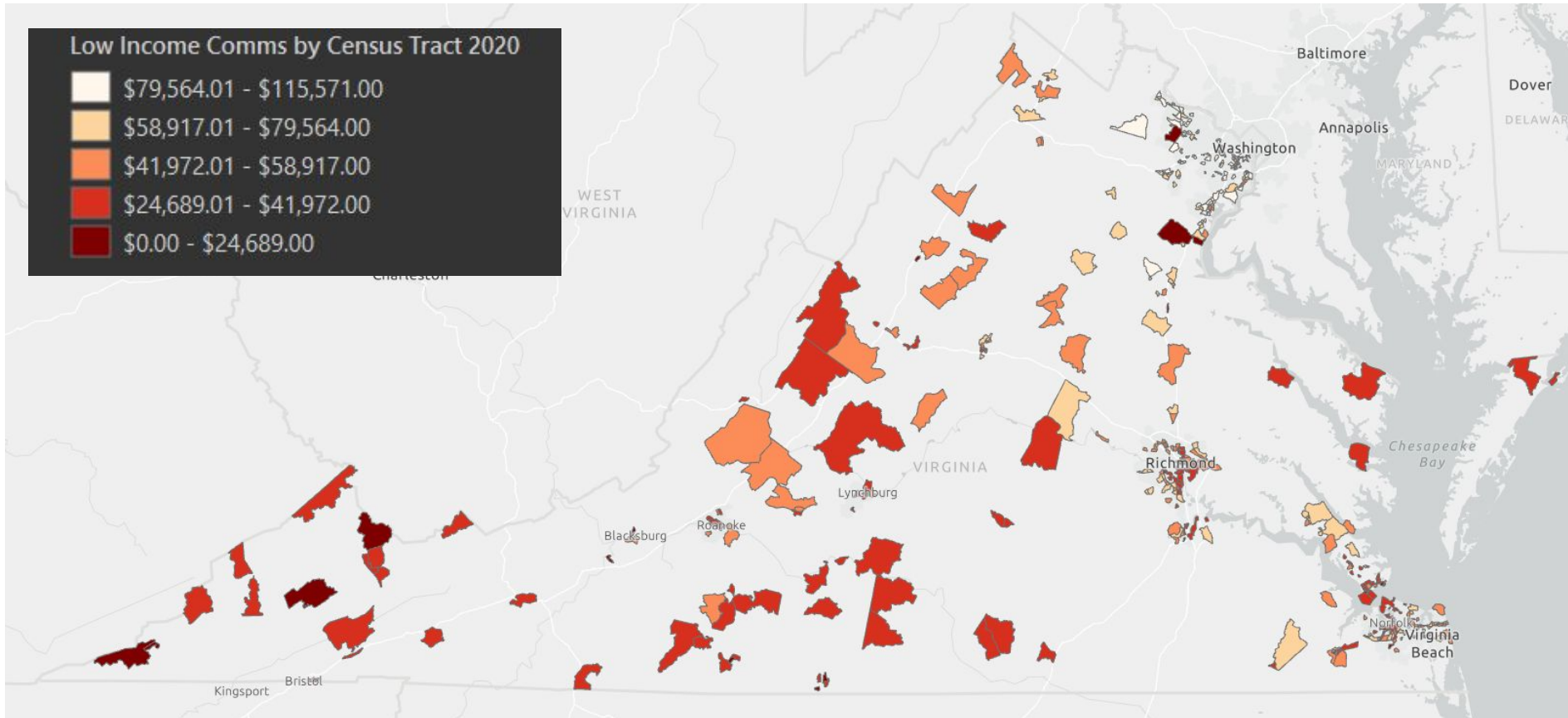


DRAFT - 9.13.22

Virginia Census Tracts where a majority of the population are individuals who identify as people of color in 2020.

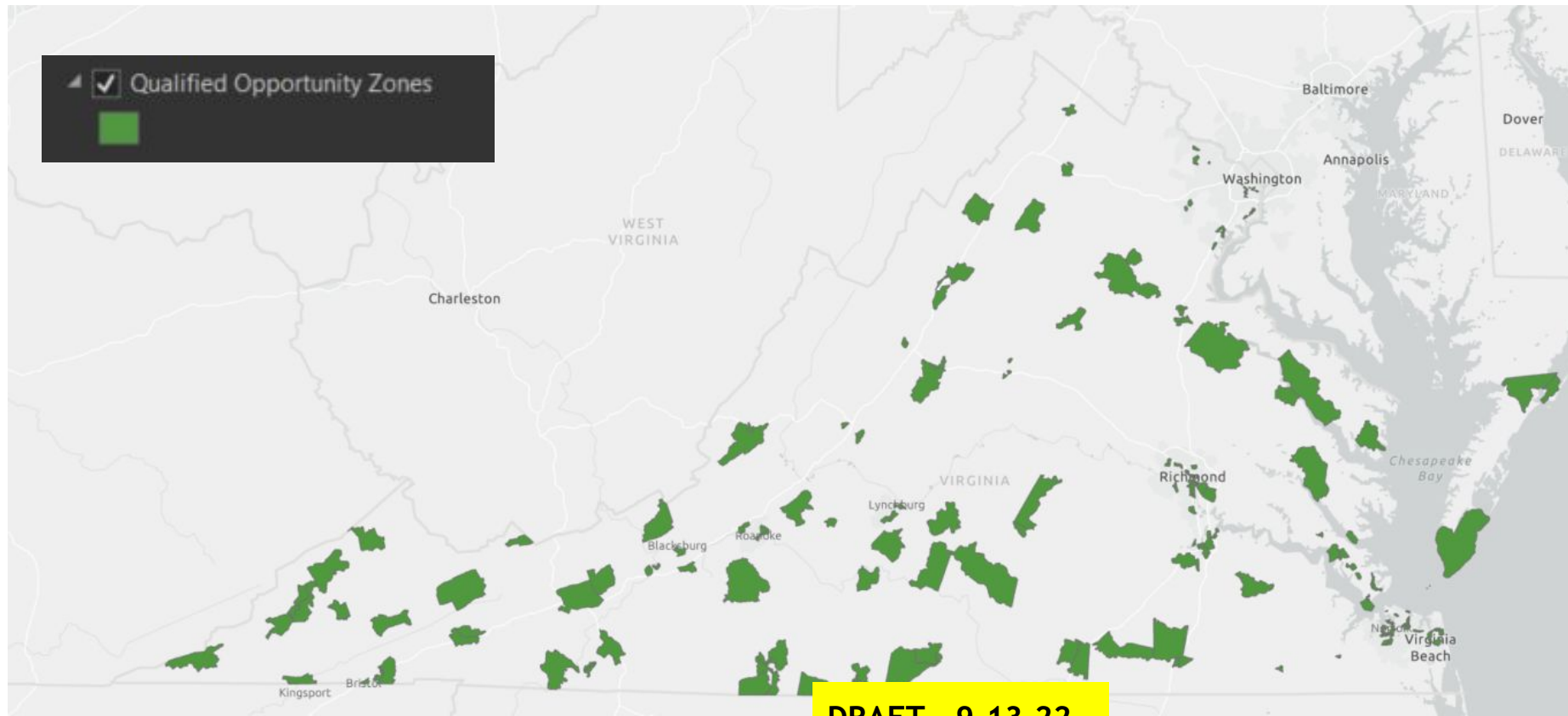


Virginia Census Tracts that met the low income geographic area definition in 2020



Qualified Opportunity Zones from 2017

- ▶ Qualified Opportunity Zones are low-income census tracts, nominated by the governor of Virginia and certified by the U.S. Treasury, that have an individual poverty rate of at least 20 percent or a median family income no greater than 80 percent of the area median income.



DRAFT - 9.13.22

Objectives:

- ▶ §56-576 of the Code of Virginia defines HEDCs as (i) a community in which a majority of the population are people of color or (ii) a low-income geographic area
- ▶ i) means a U.S. Census tract where more than 50 percent of the population comprises individuals who identify as belonging to one or more of the following groups: Black, African American, Asian, Pacific Islander, Native American, other non-white race, mixed race, Hispanic, Latino, or linguistically isolated.
- ▶ ii) "Low-income geographic area" means any locality, or community within a locality, that has a median household income that is not greater than 80 percent of the local median household income, or any area in the Commonwealth designated as a qualified opportunity zone by the U.S. Secretary of the Treasury via his delegation of authority to the Internal Revenue Service.

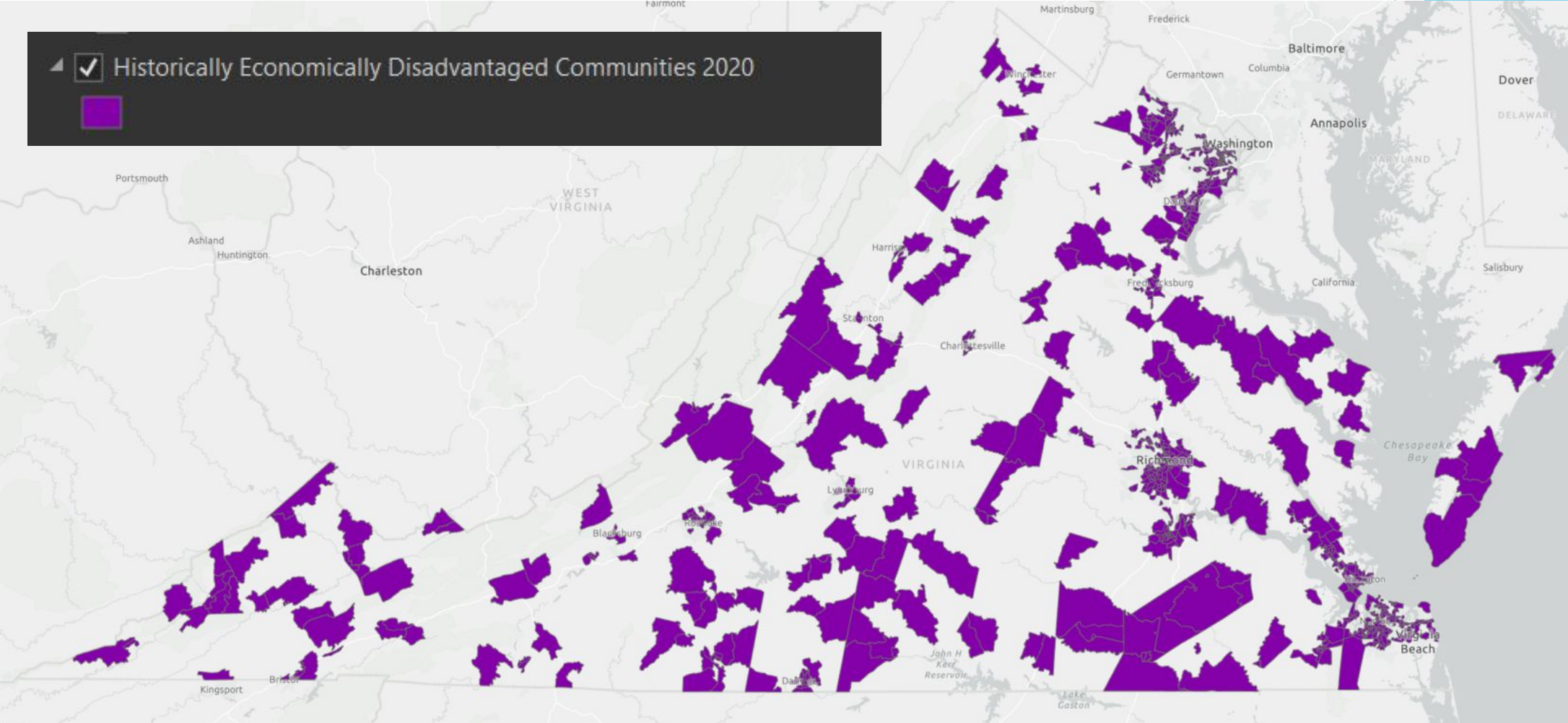
Data Acquisition

- ▶ Data was obtained from US Census Bureau Data portal.
- ▶ Demographic information was collected from the 2020 American Community Survey (ACS) and the ACS was chosen as it was the most current and complete data set that encapsulated our target populations.
- ▶ Median household income was derived from tables S19013 and B19013 on the US Census Bureau website.
- ▶ Communities where a majority of the population are people who identify as people of color was collected from table B02001.

Data Processing

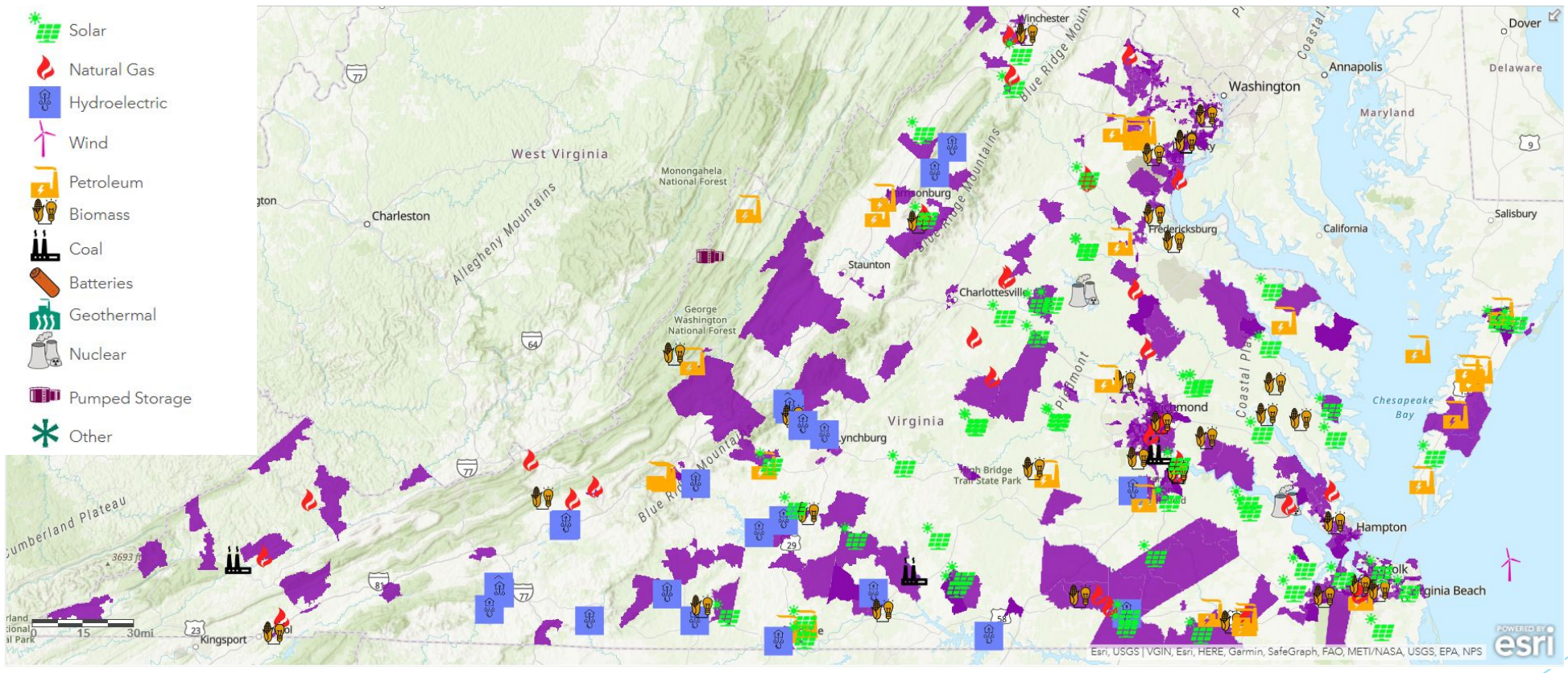
- ▶ Low income geographic areas were created by obtaining median household income for Virginia counties which served as the “local median household income.” A field that contained county MHI at a 80% threshold was created. This 80% field was used to select census tracts that had a MHI that fell beneath the local median household income. County and census tract data were collected from the 2020 ACS.
- ▶ Communities of color were determined by adding Black, African American, Asian, Pacific Islander and Native Hawaiian, American Indigenous and Alaskan Native, Hispanic, Latino, other non-white races, and mixed race populations in to a single field before running a select by attributes to select census tracts that had majority communities of color compared to total population.

Visualization



DRAFT - 9.13.22

HEDCs in relation to power plants across Virginia 2020



DRAFT - 9.13.22

Questions to answer and concerns to address

- ▶ 2020 was a difficult year for demographic data collection. The ACS Income and Poverty data from the US Census Bureau contained several census tracts that had zero median household income listed for the year 2020. The residential tracts that are missing median household income make up less than 1% of the “low income” census tract layer. However, a method for filling these data gaps still needs to be chosen.
- ▶ The validity of linguistically isolated individuals needs to be checked. Linguistically isolated communities were left out of the communities of color layer due to the US census data only providing the age and households containing linguistically isolated individuals not the number of individuals themselves.

Sources

Justice 40 - demographic tracts [Justice40 tracts now available in Living Atlas \(esri.com\)](#)

Methodology [Methodology & data - Climate & Economic Justice Screening Tool \(geoplatform.gov\)](#)

Opportunity zone - [Opportunity Zones Resources | Community Development Financial Institutions Fund \(cdfifund.gov\)](#)

Source for ArcGIS Online Layers: [Federal User's profile \(arcgis.com\)](#)

EIA Database - Energy Information Administration [EIA - State Electricity Profiles U.S. Energy Information Administration - EIA - Independent Statistics and Analysis](#)

Definition Source [§ 56-576. Definitions \(virginia.gov\)](#)

Census Tract of Median household income
[B19013: MEDIAN HOUSEHOLD INCOME IN... - Census Bureau Table](#)

VGIN Layer of communities of color EJA definition
[Communities of Color - Over Statewide Average of Individual Populations of Color \(2015-2019 ACS\) Open Data | VGIN \(virginia.gov\)](#)

DHCD [oz-fact-sheet.pdf \(virginia.gov\)](#)

Thank you!

What clarifying questions may we address?



DRAFT - 9.13.22